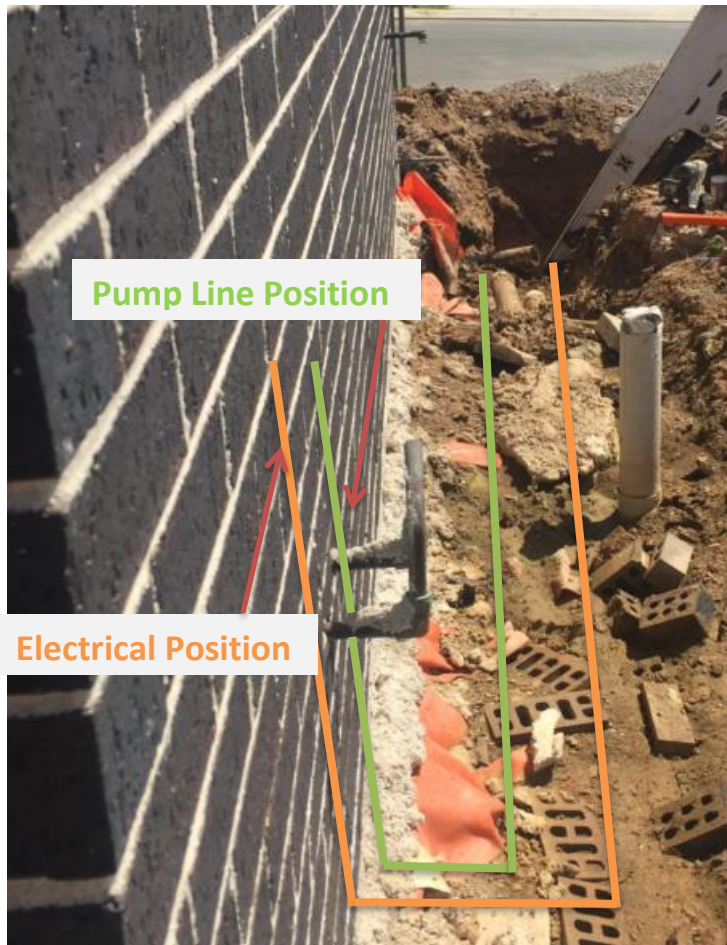
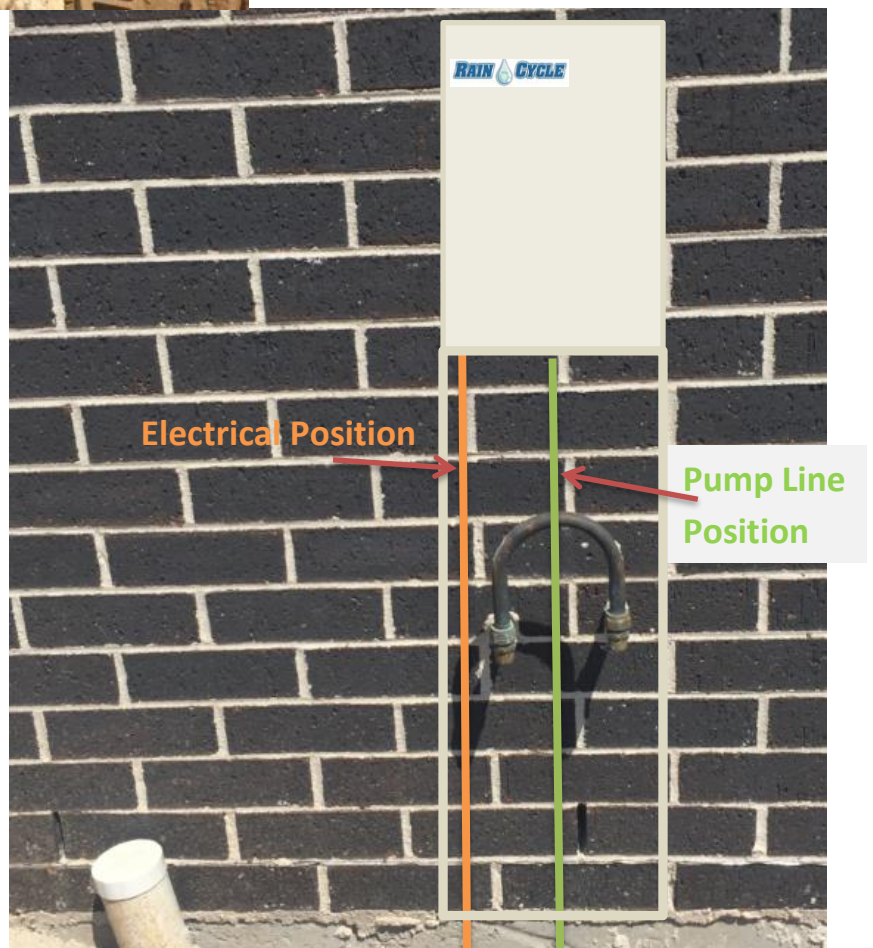


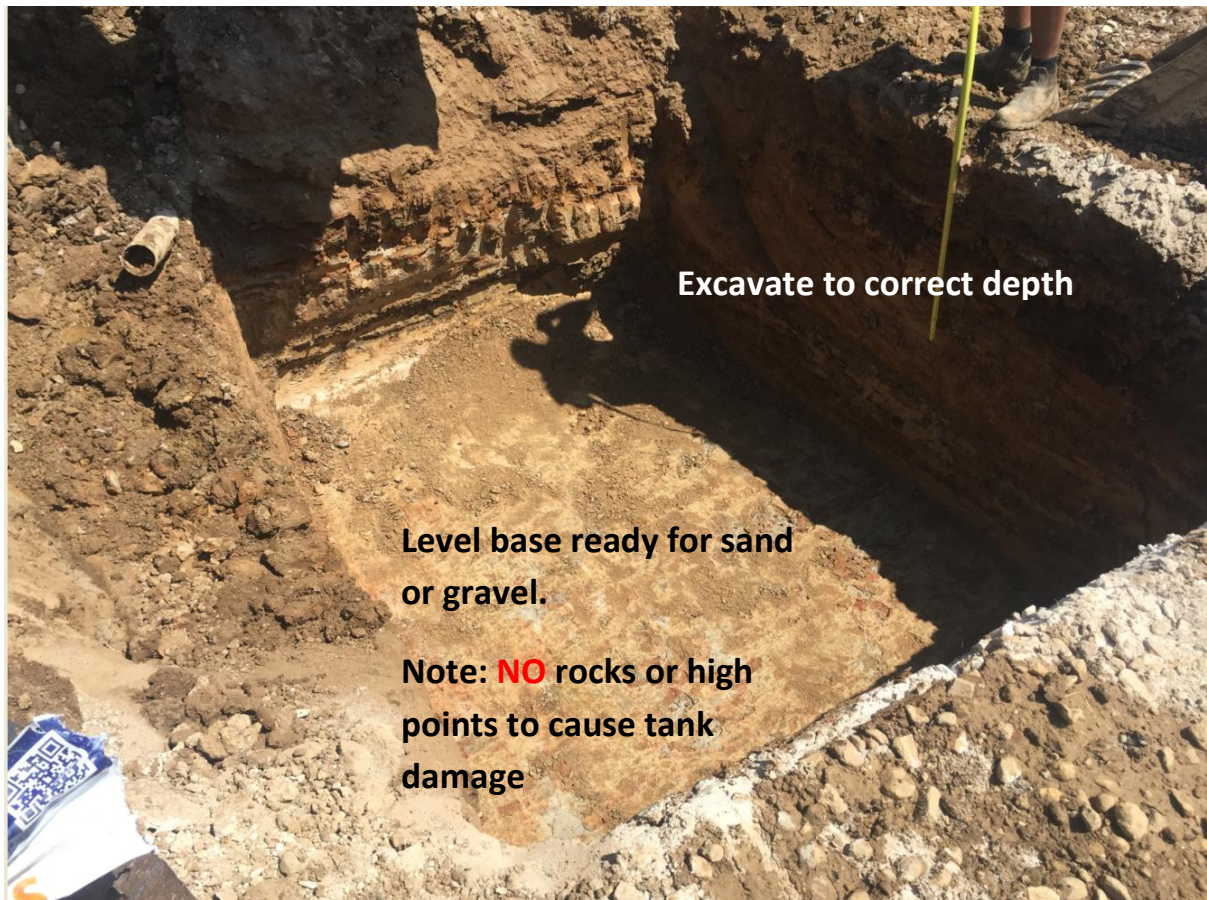
Installation



Pipework set up for control box.

- 160mm apart (centres) and 50mm off the wall.
- Control box within 15 metres from the tank (pump has 20 metre lead)
- Fittings down low enough to allow enough room to fit pipes correctly
- Pump line from tank to go in the middle between the two plumbing pipes
- Electrical conduit to the left hand side and against the wall
- Ensure conduit is laid at correct depth
- Pull pump cable through to control box position



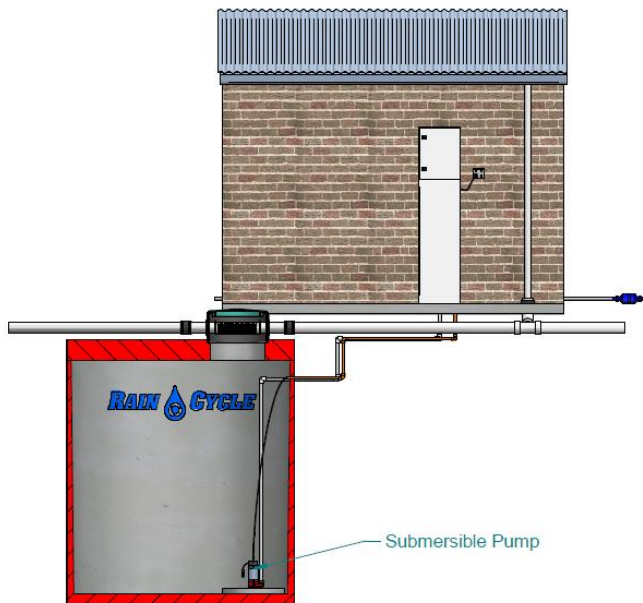




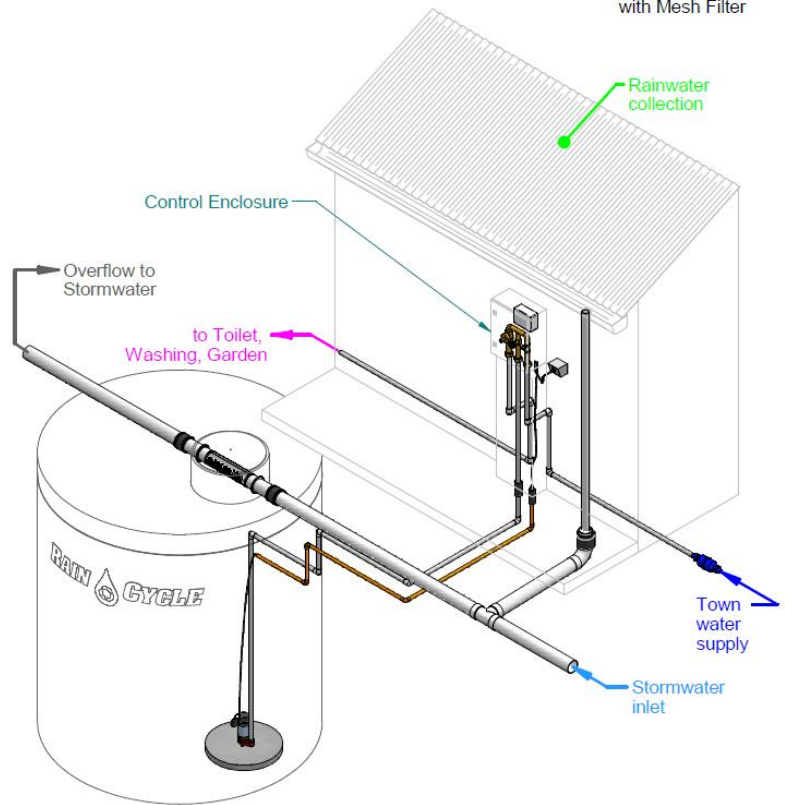
Ideally remove any backfill from around hole. Don't leave excavated hole unattended and barricade off to stop the risk of falling in



Ensure tank is level and correct position before disconnecting the "swift-lift" connectors near the base of the tank



Raincycle Tank with Mesh Filter



How much yard can you save by putting your **RAIN CYCLE** tank underground?

It's also a lot neater than an above ground Basix Tank with pipes going everywhere



Free Call

1800 006 176